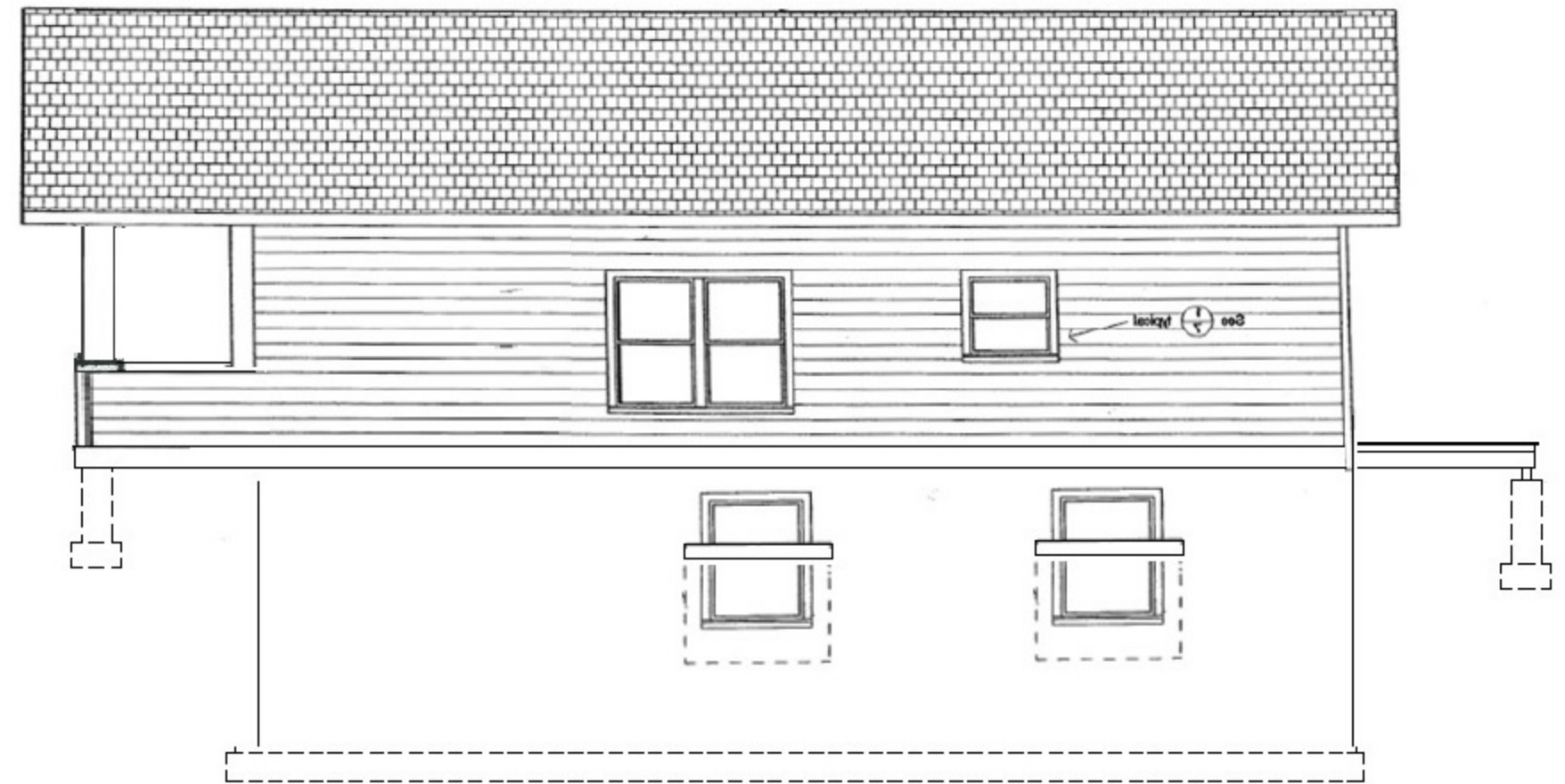


West Elevation - North Main Street



South Elevation - North Main Street



NATIONAL AFFORDABLE HOUSING NETWORK

P.O. Box 3706 Butte, MT 59702 406-782-8145 Fax: 406-782-5168

Copyright 2001 by the National Affordable Housing Network. All rights reserved. These drawings may not be copied by any means without the express written permission of the National Affordable Housing Network. They are issued for educational purposes only, and pertain only to a specific climate.

DATE: 010605

SCALE: As Noted

DRAWN: Mark Antonioli & Bob Corbett

FILENAME:

HIGH PERFORMANCE HOME PROGRAM (Hp2)

Hp2 also stands for High Performance Housing Partnership for affordable housing, developed by the National Affordable Housing Network (NAHN). NAHN is an equal opportunity and fair housing provider.

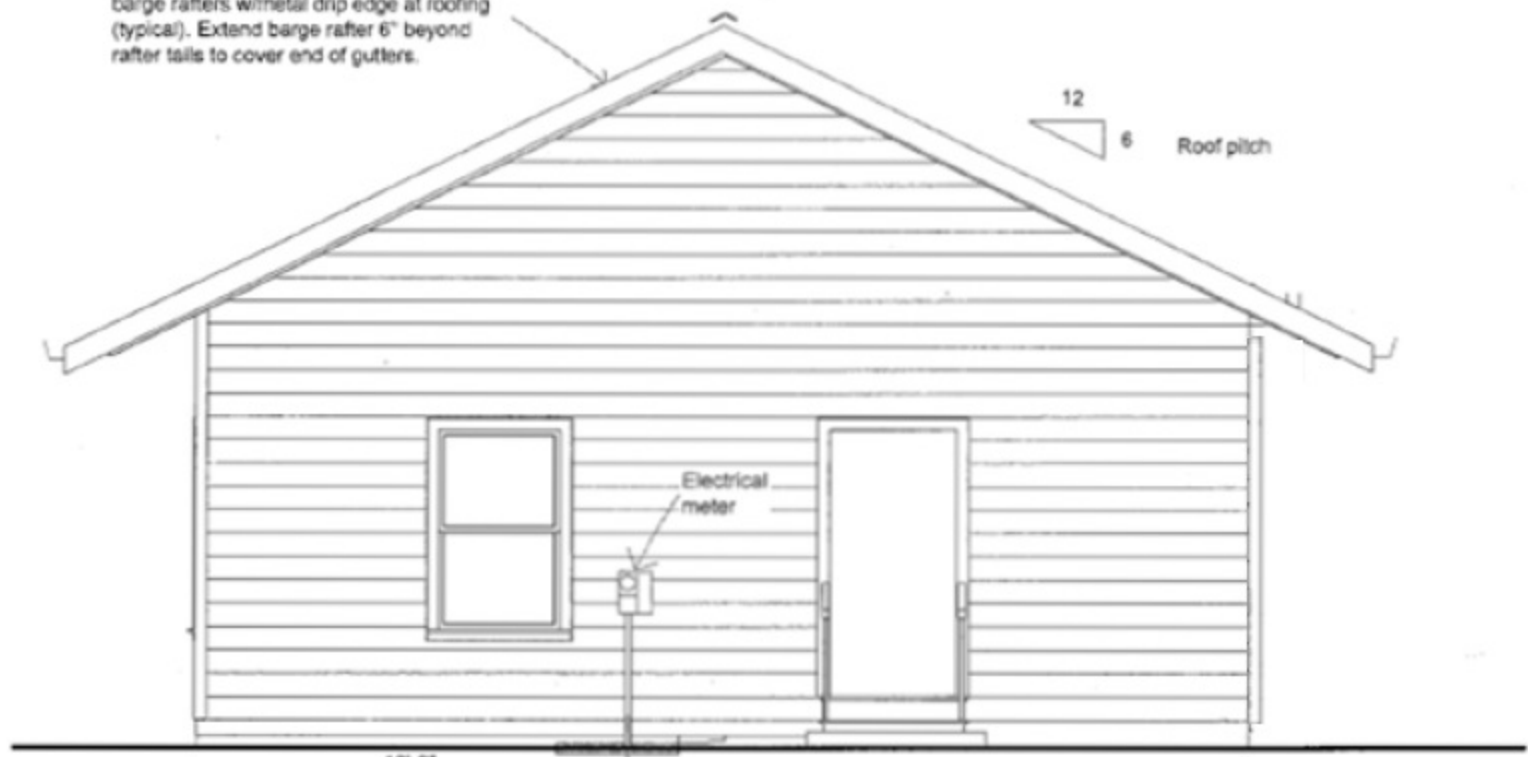


PLAN 1092

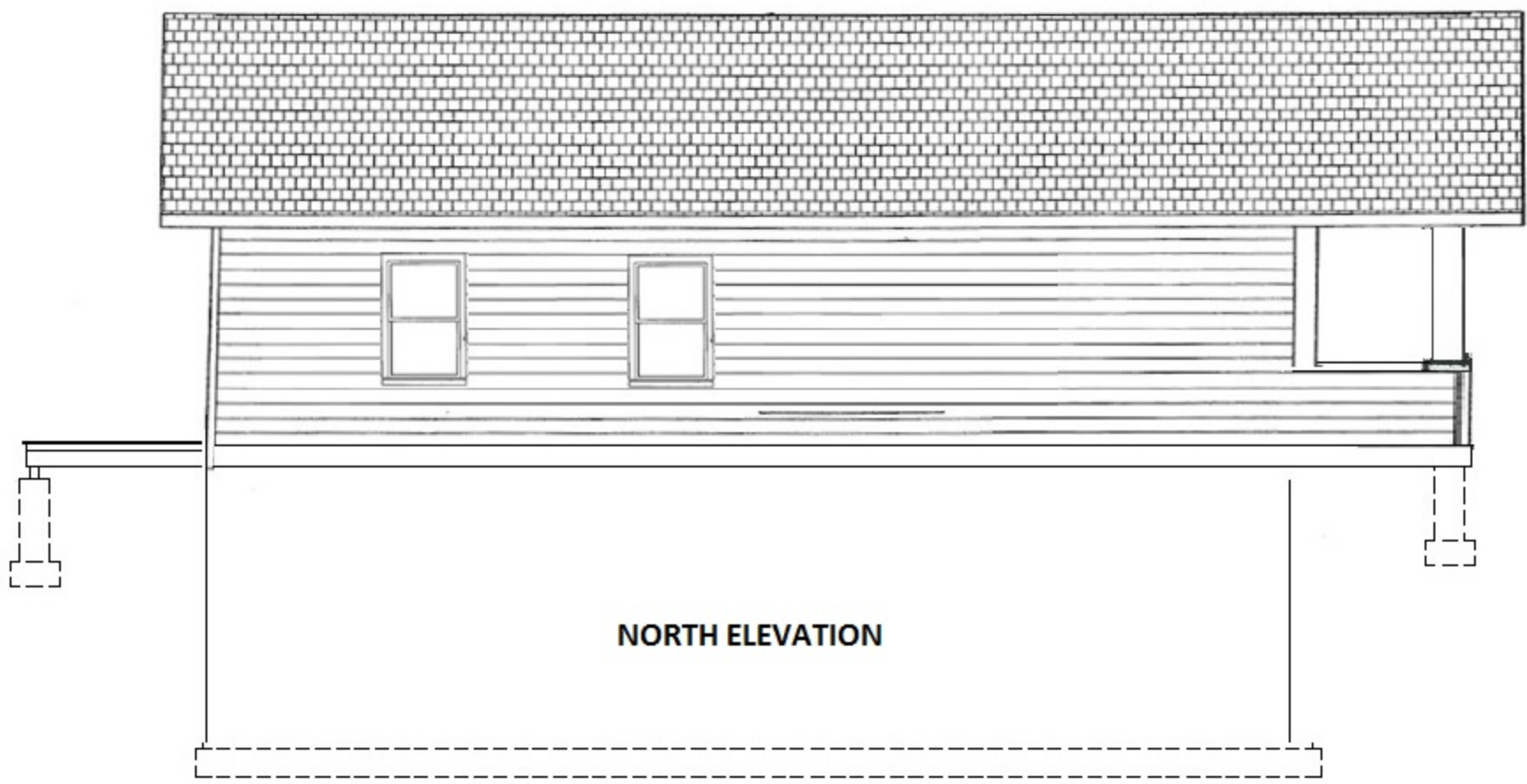
Three Bedroom Home

2x8 - Construction common Redwood barge rafters w/metal drip edge at roofing (typical). Extend barge rafter 6" beyond rafter tails to cover end of gutters.

12
6 Roof pitch



EAST ELEVATION



NORTH ELEVATION



NATIONAL AFFORDABLE HOUSING NETWORK

P.O. Box 3706 Butte, MT 59702 406-782-8145 Fax: 406-782-5168

Copyright 2001 by the National Affordable Housing Network. All rights reserved. These drawings may not be copied by any means without the express written permission of the National Affordable Housing Network. They are issued for educational purposes only, and pertain only to a specific climate.

DATE: 010605

SCALE: As Noted

DRAWN: Mark Antonioli & Bob Corbett

FILENAME:

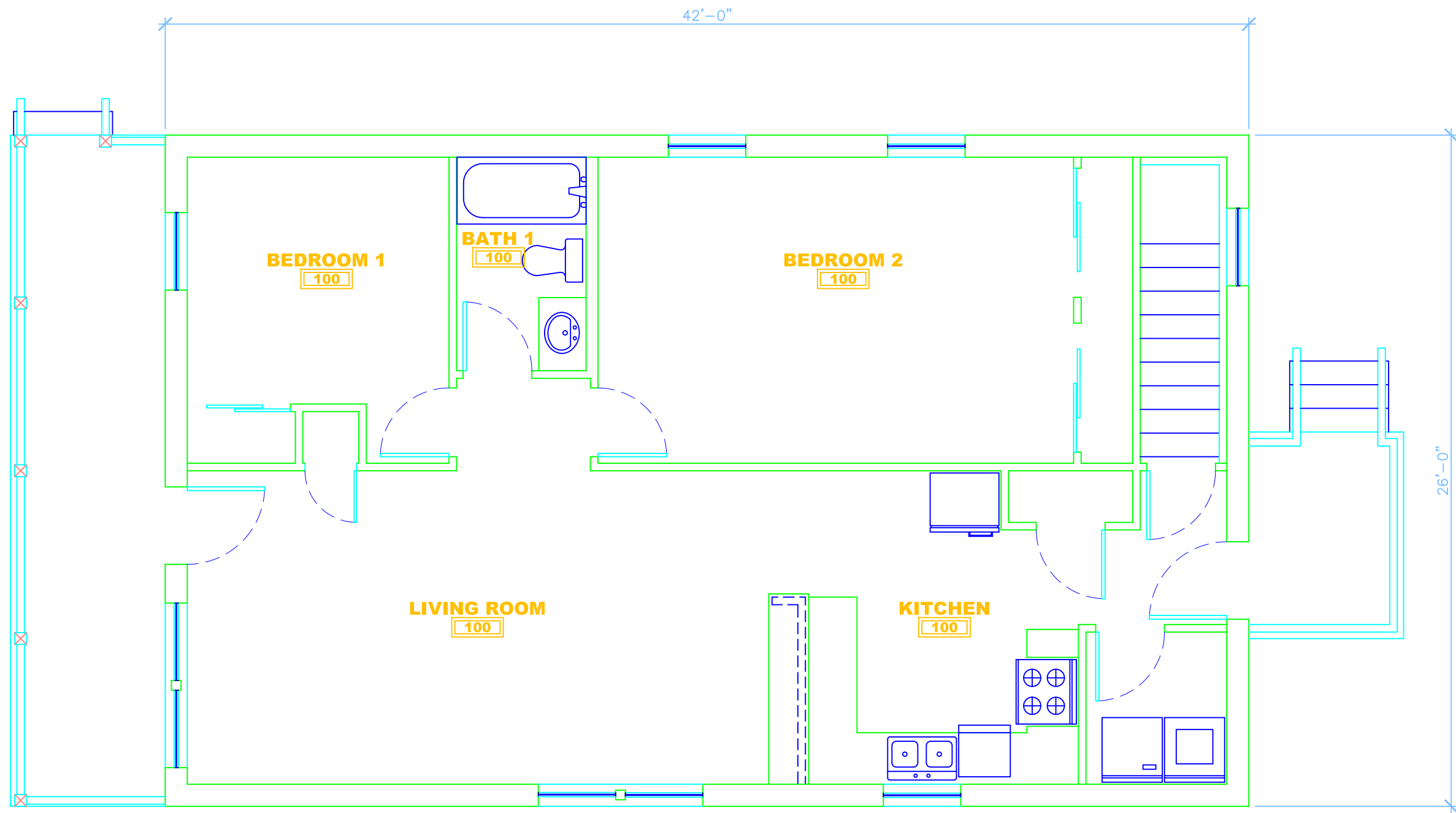
HIGH PERFORMANCE HOME PROGRAM (Hp2)

Hp2 also stands for High Performance Housing Partnership for affordable housing, developed by the National Affordable Housing Network (NAHN). NAHN is an equal opportunity and fair housing provider.

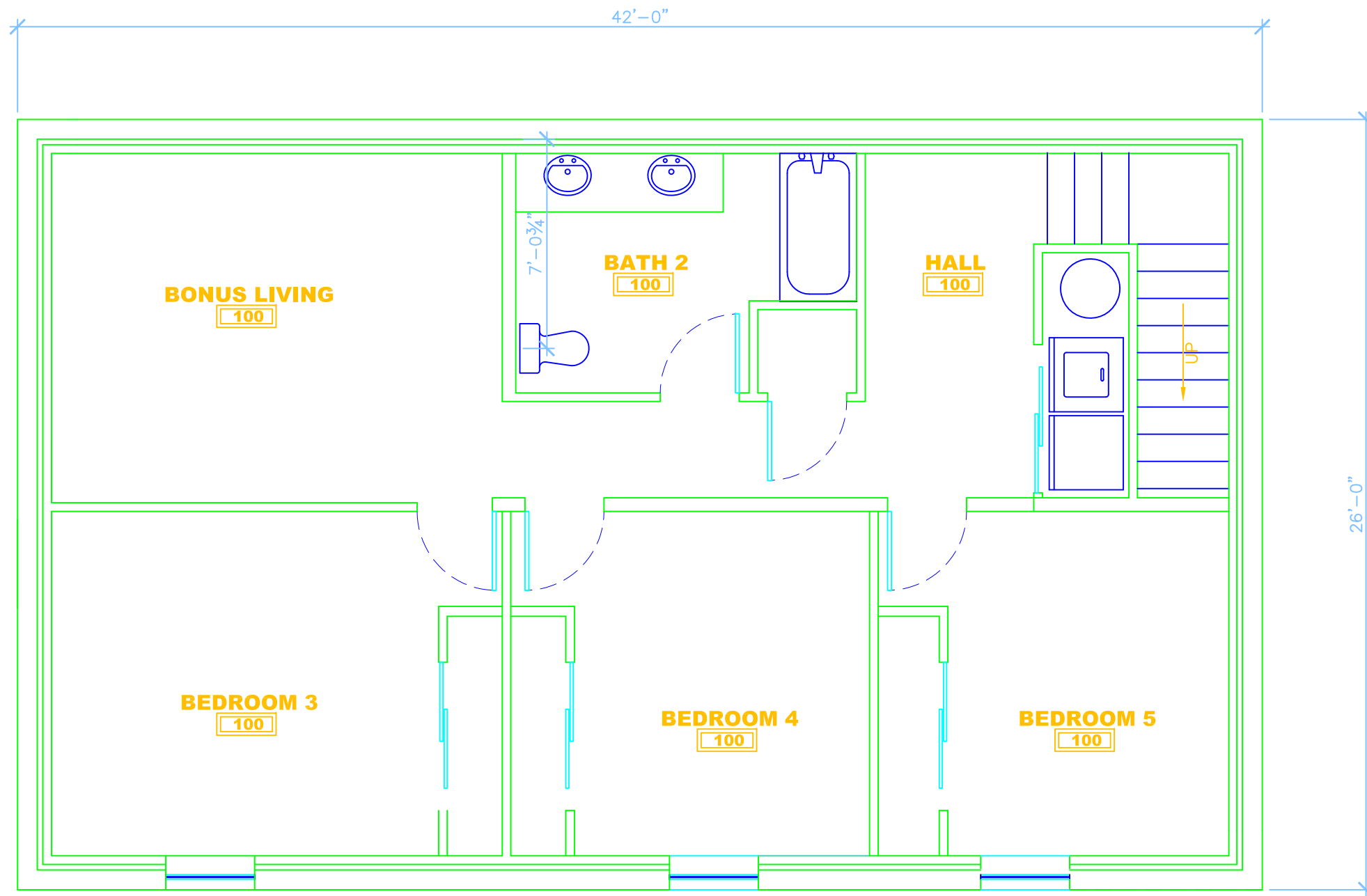


PLAN 1092

Three Bedroom Home



MAIN FLOOR PLAN - 1092



BASEMENT PLAN — 1092